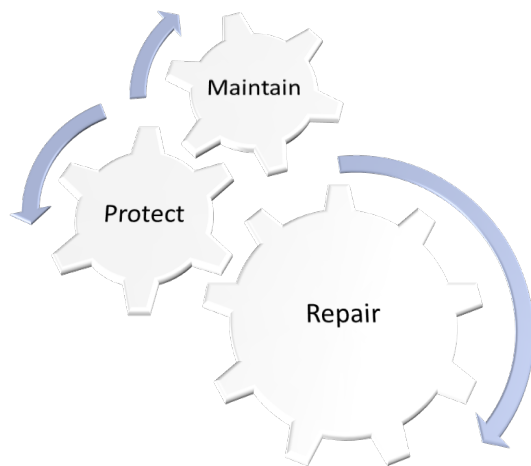




# Company Capability Statement



*Asset integrity management solutions*



[WWW.NUKOTEAUSTRALIA.COM](http://WWW.NUKOTEAUSTRALIA.COM)



## About Us



### Who we are

Nukote Australia Pty Ltd is a West Australian Company with the primary business focus on asset integrity management solutions such as application of high-performance spray-on Polyurea, protective coatings systems and other specialised coatings.

Since 2005, Nukote Australia has forged a reputation, most notably in the mining sector, as a professional organisation consistently delivering projects with high standards of service, in a safe and timely manner.



Nukote is a multidisciplined contractor providing innovative solutions for complete structural remediation and asset maintenance. Our multiskilled specialist operators can respond to any immediate client requirements including shutdowns for effective serviceability.

All Nukote service offerings are based on our local experience backed with innovative technologies for effective, whole-of-life, value-for-money solutions. We also provide a comprehensive mobile and workshop based abrasive blasting and industrial painting service.

Nukote Australia welcomes the opportunity to provide further information on the benefits of selecting Nukote as specialist applicator for your protective coating requirements.



Please call us on 08 9419 0600 or email [info@nukoteaustralia.net.au](mailto:info@nukoteaustralia.net.au)





## About Us

### Our Vision

Nukote prides itself in developing innovative solutions to all our customers. No job is too big or too small as we value in supporting our clients beyond project handover.

Our commitment is to create local opportunity, growth and impact in community by upskilling our employees.

### Our Values

- **Diversity & Inclusion** – Nukote practices equal opportunity framework for all recruitments comprising people from different genders, sexual orientations, religions, races, ethnicities, ages, etc. Nukote's conscious efforts, behaviours, policies and norms are to make every team member heard and values with their unique differences.
- **Innovation** – Innovation is part of our everyday life. We innovate to make a difference and maximise our chances of success.
- **Environment** – We take special care in upholding standards of environment protection in every area of our business. We are proactive and detailed in our compliance with local, state and federal laws.
- **Excellence** – Exceed expectations and take intense pride in everything we do including but not limited to safety and quality.
- **Integrity** – Uphold the highest ethical standards and promote trust and respect.

### Safety Commitment

We are committed to working safely, take care of each other, protecting our communities and respecting the environment. Our principles:

- Awareness of safety hazards
- Stay informed
- Complete training
- Identify and mitigate unsafe conditions
- Provide efficient equipment for execution of works.



### Our Company

Nukote Australia has both fixed and mobile facilities to meet any requirement.

Operating Facilities:

- Henderson, Perth (Head Office)
- Kalgoorlie
- Keysbrook

The Company uses fully self-contained containerised and truck mounted preparation and application units which can be mobilised nationally and internationally at short notice. Nukote Australia is virtually self-sufficient on any site and in any conditions.

### Services we offer

The Company's core services include:

- Application of spray on protective polymer coatings
- Industrial anticorrosion solutions
- Membranes and waterproofing
- Acid proofing
- Concrete coatings and/or linings
- Abrasive blasting and painting
- Hazardous coatings removal
- Specialised engineered coatings for steel and other metals
- Asset surveillance and monitoring
- Ultra-High-Pressure water blasting/descaling
- NDT testing
- Hydro demolition works
- Pile wrapping and jacketing services
- Timber coatings
- Access systems
- Asset maintenance contracts
- Shutdown maintenance
- Specialised product advises based on Nukote's extensive experience
- Coating testing including holiday detection, WFT, DFT
- QA QC report preparation and monitoring
- Mechanical and structural repairs to core scope execution
- Technical and engineering support

Nukote Australia provides services across a wide range of industries including Mining, Mineral Processing, Transport, Infrastructure, Water, Oil and Gas, Marine and Construction to provide our clients with single point accountability for asset protection, repair and maintenance. Within each of the above sectors, our core services are asset condition assessment, engineered solution development, repair and ongoing maintenance. This allows our business to work within its core capability and in turn maximise results for our customers.





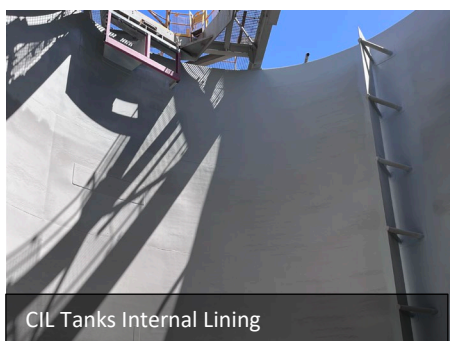
## Mineral Processing



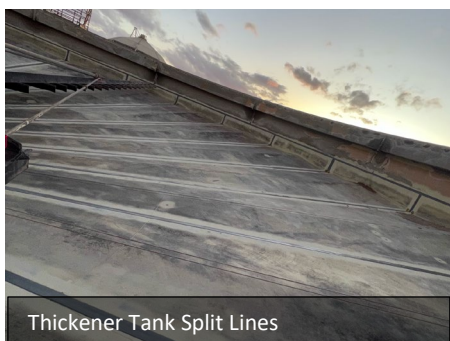
A range of typical applications for Nukote polyurea is summarised on the following pages. This is not an exhaustive list, and we welcome enquiries for other coating or lining problems you may have.

### CIL and Leach Tanks

Nukote polyurea is an ideal lining for the corrosive and abrasive conditions found within CIL tanks. As polyurea sets almost instantly in all ambient conditions, the CIL tanks can be returned to service within hours of completion of the lining.



- Quicker overall project schedule means the tank is returned to the circuit sooner, decreasing loss of yield and saving money.
- Flexible membrane means that the lining does not crack.
- Fast cure means that the lining can be spark tested and returned to service directly after spraying is complete.
- Cure is unaffected by cold temperature.
- Any repairs or touch ups can be made without waiting for the liner to cure.
- Nukote polyurea is touch dry within seconds, regardless of ambient conditions.
- Unlimited film build in a single application means that we can apply at a higher thickness at high abrasion/wear points e.g. around baffle supports.
- Higher abrasion resistance.



### Thickeners

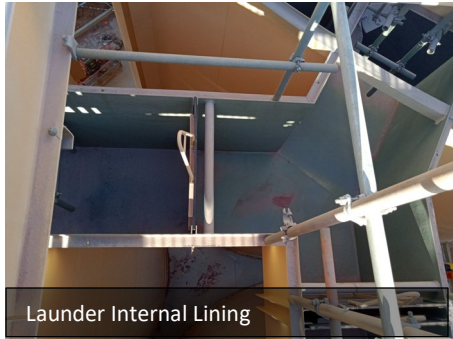
Thickeners are a critical component of most mineral processing plants and frequently require repairs during shutdowns. Nukote polyurea is the ideal repair or lining material for concrete or steel thickeners.



- Can be applied over existing coatings with suitable surface preparation.
- Repairs can be made during relatively short shutdown periods.
- Suitable to coat walls, floors, discharge cones, rake arms and rakes and to reseal joints.
- Flexible, fast curing, waterproof and tough.



## Mineral Processing



### Launders

Launders and other flumes are typically subjected to highly abrasive and corrosive conditions due to the high-speed flow of water borne solids. They frequently require patching or replacement.

Nukote Australia can abrasive blast and line launders within short shutdown periods. This is a very cost-effective approach to launder maintenance.

- Provide abrasion and corrosion resistant lining for launders.
- Fill existing minor holes with polyurea instead of welding patches.
- Patch weld repairs.
- Fast process requires only short shutdown.



### Agitator Blades and Shafts

Nukote polyurea is used as an alternative to rubber due to the speed of application and performance of the product. Unlimited film build means that additional product can be applied on high wear areas.

A specialised process is used to seal the bolts and nuts on the boss to protect against erosion and abrasion.



### Ball and SAG Mills

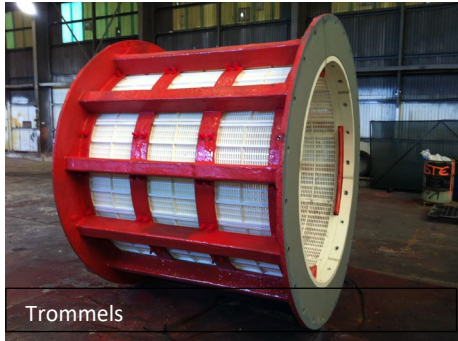
Nukote have developed unique methods and expertise to line the shell of mills with polyurea instead of the traditional rubber system. Our process reduces the shutdown time required for a mill re-line by several days. Customers have testified that Nukote lined mill has less bolt breakages and maintenance issues than a rubber lined mill.

- Applied and proven by Nukote Australia throughout Australia as well as in PNG, New Zealand and Kyrgyzstan.
- Saves several days on a typical mill re-line shutdown with potential saving of hundreds of thousands of dollars.
- Eliminates the racing and shell wear that occurs between seams on rubber shell lining.
- Repairable and re-coatable in the event that damage occurs, or the mill shell needs NDT inspection.





## Mineral Processing



Trommels

### Trommels

A seamless Nukote polyurea lining is sprayed onto trommels as a superior alternative to rubber lining.

- Nukote polyurea is hard wearing and seamless and can be applied at greater thickness in high wear areas.
- A Nukote polyurea lined trommel can be repaired in situ with a faster turn-around in maintenance / shutdown situations.



Screen Deck

### Screen Decks

Screen decks are sprayed with Nukote polyurea to protect the steel from abrasion and corrosion.

- The tough but flexible polyurea coating withstands impacts, flexing and chemical attack.
- Any damage can be repaired in situ and returned to service quickly.



Underpan Chute

### Hoppers and Chutes

Hoppers, chutes and other plant which transfer materials often wear out due to a combination of abrasion and corrosion.

- Nukote polyurea is applied inside the hopper to protect the steel from abrasion and outside the hopper to protect against external corrosion.
- The thickness of the lining can be increased in high wear or impact zones.
- Nukote polyurea will also reduce hang up, helping to maintain free flow of materials.



Bin Hopper Chute

### Float Cells

Nukote polyurea provides a seamless, abrasion resistant lining to seal, repair and protect all elements of a float cell, including the stators.

- Faster to apply and superior to rubber lining.
- Ideal for making repairs during a shut down.





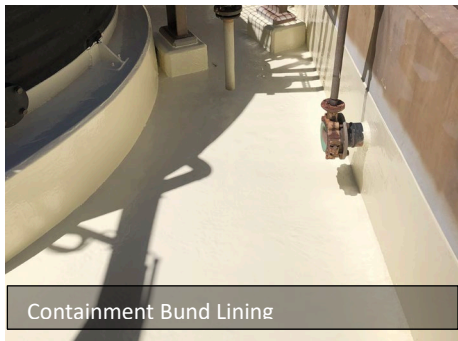
## Mineral Processing



Boot Seals



Water Tank Lining



Containment Bund Lining



Containment Bund Lining

### Boot Seals

Nukote polyurea is applied as a bandage around the steel tank and concrete footing interface to form a boot seal.

- Protects the concrete from chemical attack.
- Prevents ingress of corrosive liquids and salts under the tank which eliminates a major cause of tank floor corrosion.

### Tank Linings – Process Water and Chemicals

Nukote polyurea is frequently used to line, seal, remediate and protect concrete and steel tanks used to contain a wide variety of liquids.

- Provides a tough, flexible, seamless, impermeable membrane which is tightly bonded to the tank wall and floor.
- High elongation allows for the tank to move and flex without cracking – epoxy tank linings have minimal elongation and will crack if the substrate moves.
- Excellent bond to concrete, steel and over PU sealants.
- Unlimited film build allows additional product to be built up over degraded concrete or steel to remediate damaged surfaces.
- Resistant to a wide range of chemicals with test data as back up.
- Very fast surface preparation and coating process allows the tank to be returned to service far sooner than other coating systems.
- Product gels and dries within seconds regardless of ambient temperature.
- Nukote's internal tank linings are approved by Water Corp for potable water storage tanks.

### Containment Bund Linings

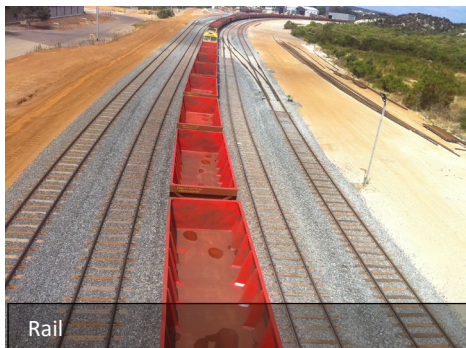
Effective containment of chemicals is of paramount importance. Nukote polyurea, applied into existing and new bunds, provides a number of benefits:

- Forms a tough, seamless lining that seals the entire bund against leakage.
- Over 400% elongation means the bund retains its integrity if the substrate moves.
- Unlimited film build means that degraded concrete can be "resurfaced" with polyurea.
- Fast application and cure rate.





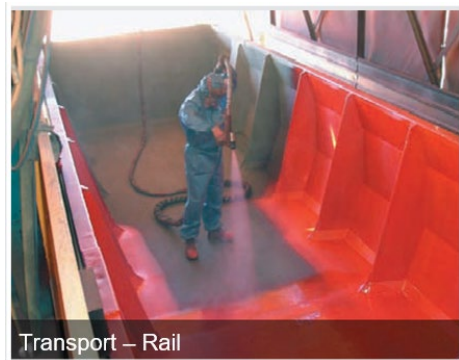
## Mineral Processing



### Rail

Nukote Australia has successfully applied Polyurea linings into over seven hundred rail wagons used for transporting minerals.

- Nukote ST Polyurea has proved to be highly effective in providing a barrier layer from abrasion, corrosion and reducing “hang up”.
- Utilising the Nukote ST Polyurea system extends the life of the new or used rail wagons considerably, providing significant savings on repair and replacement.
- With two-year maintenance inspection intervals, replacement of steel panelling on rail wagons caused by corrosion and abrasion can be eliminated.



### Road Transport

Nukote ST linings are applied inside new or existing bins, trailers, side tippers and other shipping containers to protect against corrosion and abrasion and reduce hang up.

The linings can be repaired or replaced if they are damaged or reach the end of their service life.

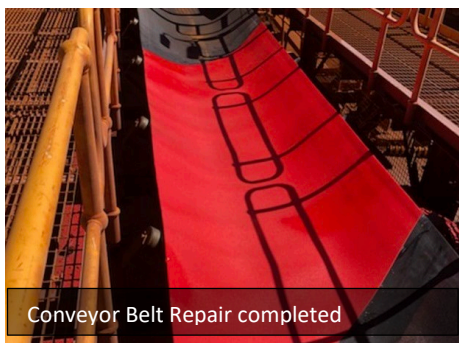
### Conveyor Belt Repair

The majority of conveyor belts in the mining industry will eventually succumb to fatigue. A common problem is the damage on the sides where the skirts meet the belt and over time causes significant wear.

Nukote Australia has developed a unique system to repair worn conveyor belts. The system uses the latest innovation in polymer engineering and high performance polyurea technology.

The conveyor belt's speed is reduced to allow the repair crew to perform work safely and efficiently. The belt's surface is prepared and cleaned. Nukote Premera AET7 is applied to create a molecular bridge between the rubber and the topcoat. The topcoat is applied at the required thickness to the area of conveyor belt showing signs of wear.

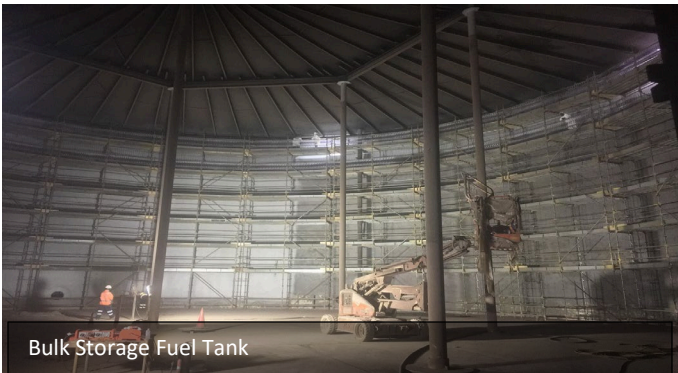
This procedure is performed in-situ with only minimum removal of the conveyor belt's components, ie. rollers and guards. Up to 1.7 km of belt surface can be repaired in a 24 hour period.







## Other Applications



Bulk Storage Fuel Tank



Pile Wrapping



Fire Retardant Coating



Acid Proofing



Stator Upstands – Abrasion Lining

01/09/2022 07:29



Waterproofing Membrane



Marine Structure



Cyclone Clusters – Abrasion Lining





## Other Applications



Concrete lining



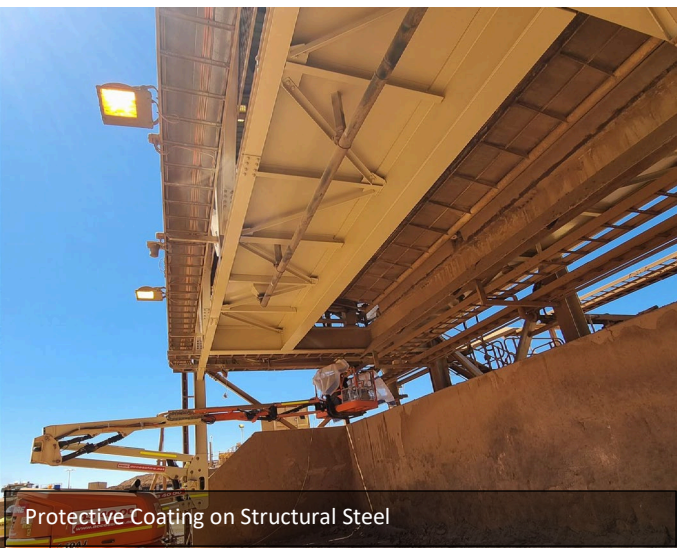
Water pipeline maintenance mobile



Drainage waterproofing



Tank containment lining



Protective Coating on Structural Steel



Internal pipe lining works





*Asset integrity management  
solutions*

ABN 85 115 710 613

Phone: +61 8 9419 0600

Address: 10 Egmont Road, Henderson WA 6166

Web: [www.nukoteaustralia.com](http://www.nukoteaustralia.com)

Email: [info@nukoteaustralia.net.au](mailto:info@nukoteaustralia.net.au)